

The EcoStack project is investigating how landscape features such as hedgerows or wildflowers benefits on-farm biodiversity and crop yield. We are asking farmers for yield monitor data from GPS-enabled combines. The data will help us to determine how landscape features found just beyond the field affects variation in crop yield, and whether yield decline towards the edge of fields can be reduced by the presence of certain types of field boundaries.

Thank you for agreeing to share your yield monitor data with us! There are several ways you can share your files depending on the system that you use:

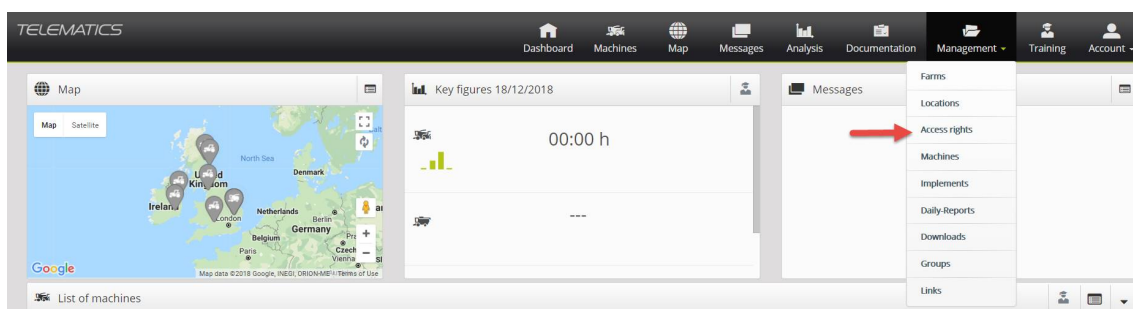
1. If your combine yield monitor has access to the cloud you can send data directly to us – see instructions below in section 1: “Sharing data directly from your yield monitor”
2. If you use Claas Telematics (cloud storage) the easiest way is to give us access to your account – see instructions below in section 2: “Giving another user access to your Claas Telematics account”.
3. If you do not have cloud access skip to section 3 below: “Getting yield data from your combine”
4. If you know that you have already extracted the data from your combine onto your computer but do not know where it is saved please see section 4: “Finding yield data on my computer”

1. Sharing data directly from your yield monitor

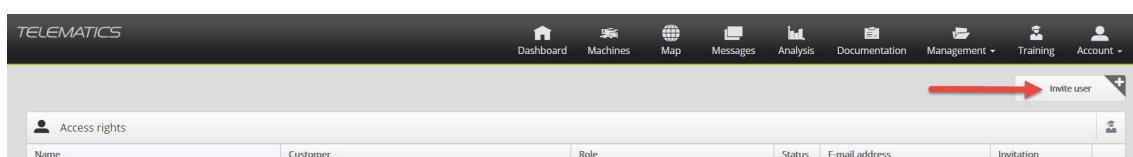
- In the yield monitor software (on board the combine) search for the option to share your yield data.
- Where there is the option to enter an email address please enter helen.metcalfe@rothamsted.ac.uk to share your data with project team members at Rothamsted.

2. Giving another user access to your Claas Telematics account

- Log in to CLAAS Telematics
- Go to Access rights in Management



- Invite a user



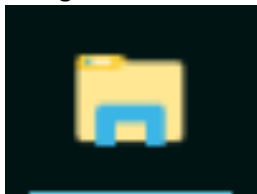
- Fill in the form shown below. Select User as a role and type in our email address which is helen.metcalf@rothamsted.ac.uk. You may have the option to add a time limit here so that we do not have access to your account indefinitely – The project ends 2022 but please give at least 6 months access so we have time to extract the yield data if you wish to set a limit.
- Press save and invite

3. Getting yield data from your combine:

- Remove the SD card or memory stick (USB stick) from your combine yield monitor.



- Insert the SD card into a card reader attached to a computer or insert your USB stick into your computer.
- Navigate to the SD card or USB stick in your file explorer



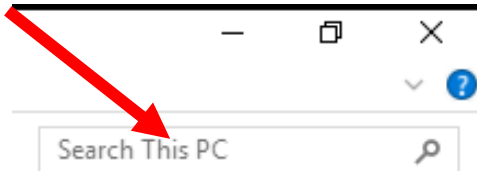
- Copy data folders from the SD card or USB stick onto your computer.
- Please send this folder and all the files in it to helen.metcalf@rothamsted.ac.uk

4. I have already downloaded yield data from the combine but don't know where it is saved:

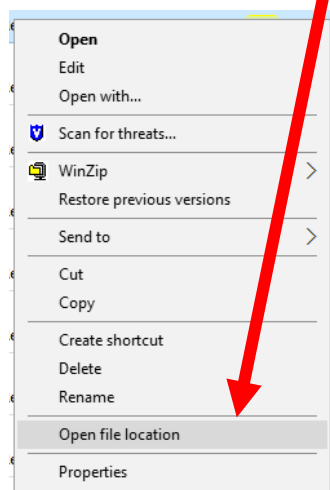
- Open up a file explorer window



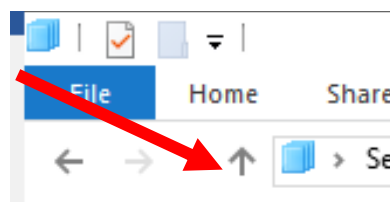
- Click in the search box in the top right hand corner



- If you know which type of yield data files you have search for that extension (e.g. ".aft"), otherwise search for each extension type in turn until you find the yield files
- Yield files could be in a number of different formats including: .XO1, .XO2, .aft please try searching for each of these in turn if you do not find any files.
- Right click on one of the files and select "Open file location"



- This will take you to the folder where that file is stored on your computer, it may be separated into different folders by field or year – navigate up through the folders by pressing the up arrow in the top left corner until you reach the top level folder where all the files are kept.



- Please send this folder and all the files in it to helen.metcalfe@rothamsted.ac.uk